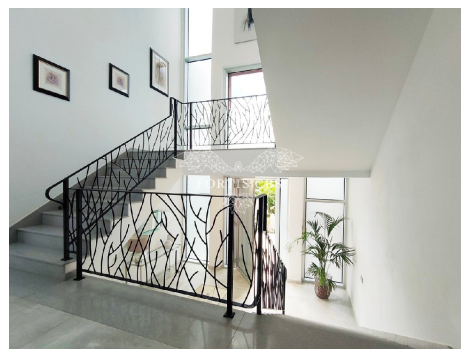
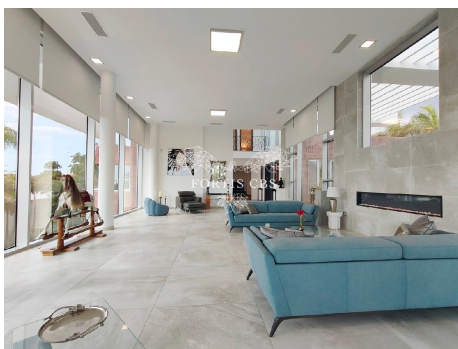


## Magnificent Luxury Villa Near Costa Adeje Golf



**Reference:** 8349

**Area/Town:** Adeje Golf

**Type:** House (Villa)

**Status:** For Sale

**Price:** €5,450,000

**Energy Efficiency Rating:** Pending

- **Beds:** 7
- **Baths:** 9
- **Plot (m2):** 2700 m<sup>2</sup>
- **Internal (m2):** 876 m<sup>2</sup>
- **Terrace (m2):** 90 m<sup>2</sup>
- **Year Constructed:** 2017

- **Decor:** Built to High Standards, Completely Equipped Kitchen, Fully Furnished, Luxury Fittings, Modern Style, Newly Built, Spacious Accommodation
- **Exterior:** Garage, Landscaped Gardens, Mature Garden, Private Pool, Private terrace, Subtropical Gardens, Sunny Terraces, Swimming Pool
- **Location:** Conveniently Situated For Golf, Conveniently Situated Tennis, Near Amenities, Prestigious Area
- **Rooms:** Dining Area
- **Views:** Garden, Mountains, Panoramic, Pool, Sea
- **Additional:** Air Conditioning

# Magnificent Luxury Villa Near Costa Adeje Golf

Fortis CBS has great pleasure in presenting for sale this incredible luxury villa set on a 2700m<sup>2</sup> plot in the prestigious Costa Adeje Golf area.

Golf Costa Adeje is a spectacular Championship golf course located in the prime Costa Adeje region of south Tenerife. The residential areas surrounding Costa Adeje Golf are characterised by exclusive, high-end real estate and it is one of the most sought after locations of the island. Bordering the immensely desirable La Caleta and Playa del Duque areas, it would be correct to say this is a very select and special part of Tenerife.

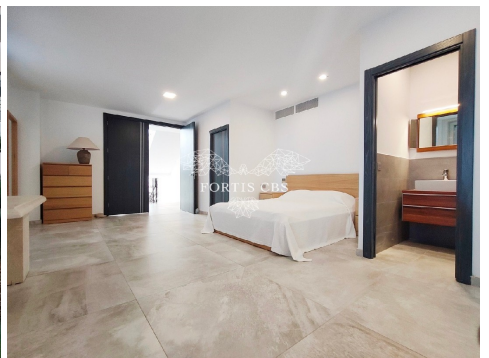
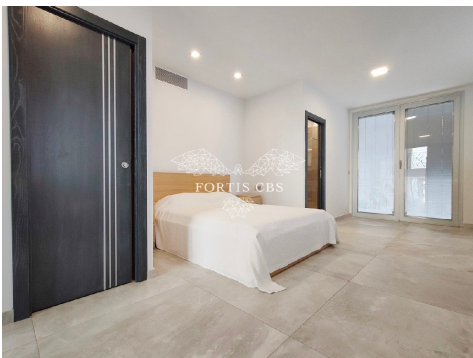
This fantastic property is constructed to the highest standards, to a design that maximises the natural light and space, and provides fantastic flexibility of accommodation. Distinctive and fully air-conditioned, this home is both practical and beautiful. Distributed over three levels with a build size of 900m<sup>2</sup>, this fine home has been professionally decorated by the luxury brand Roche-Boboïs and is offered for sale fully furnished with its top quality, featured furnishings.

Entering the property on the first floor, we arrive in the elegant entrance hallway featuring a stunning bespoke staircase. From here we move to the immaculately presented living room; a large space characterised by floor to ceiling glazing to three sides, a four-metre-high ceiling, a contemporary inset fireplace and extraordinary views. There is a separate, contemporary style, German designed kitchen with kitchen diner and a very spacious living area with dining room and tv room. This level also has a large bedroom with ensuite jacuzzi-bathroom, a family bathroom, a utility room and a second very spacious bedroom with ensuite shower bathroom. The terraces on this level of the villa are exquisite. The stunning pool terrace, with 60m<sup>2</sup> solar heated pool is set next to stunning mature tropical gardens and enjoys beautiful views. The rear terrace overlooks the gardens and is the ideal space for a peaceful morning coffee.

The second floor of the property accommodates two large bedrooms, both ensuite, each one having access directly onto generous terraces where the excellent views can be fully appreciated. The lower level incorporates a guest apartment that includes three very spacious bedrooms, all ensuite with beautiful bathroom fittings, a substantial lounge, two large living areas, very large wardrobes and storage areas as well as a shower room. Additionally on this level there is a garage for at least three cars and a machinery room.

In person inspection is highly recommended in order to appreciate the outstanding features of this luxury home.

Disclaimer: The material provided in this presentation is based on information provided by third parties whom we believe to be reliable, however we are unable to guarantee it is complete or 100% accurate, so it should not be relied upon as such. Prospective purchasers are advised to take appropriate legal advice regarding such matters.



+44 (0) 1664 820 377 • team@fortis-cbs.com • www.fortis-cbs.com